

TOTIME

TP61 series

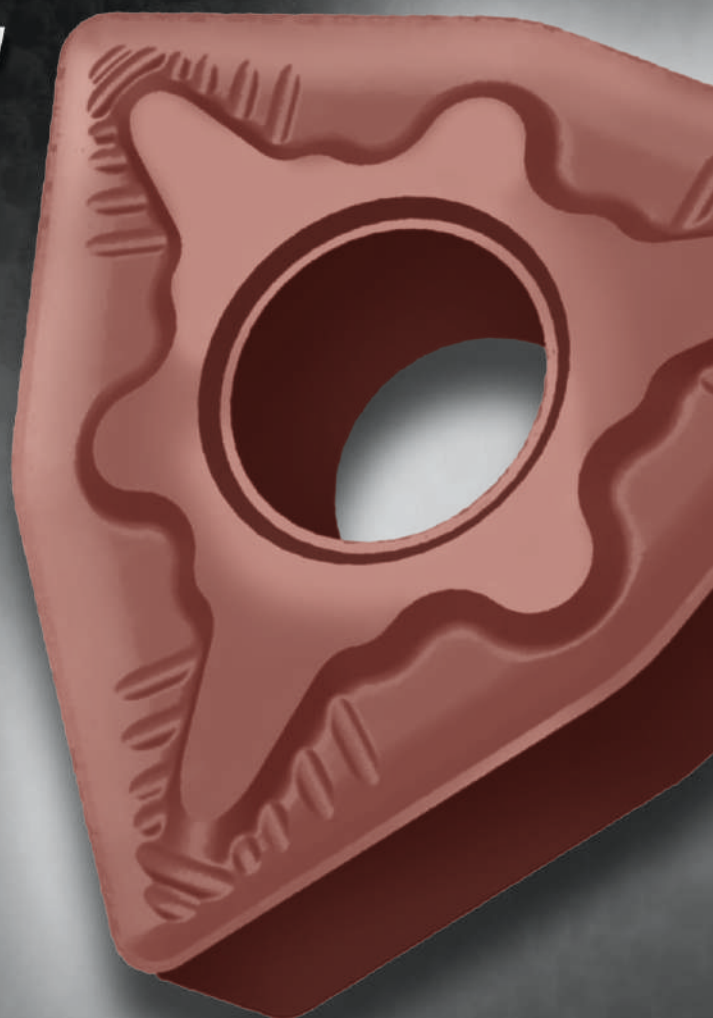
DragonCoat

***NEW CVD coated grade technology
for ISO P materials, with special
post-processing technology
for excellent wear, chipping
and abrasion resistance***

TP6110

TP6120

TP6130



TOTIME

*Unleash
the
Power*

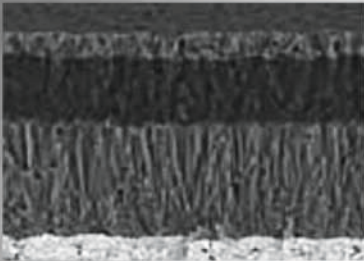


DragonCoat

TOTIME

TP61 series

TP6110

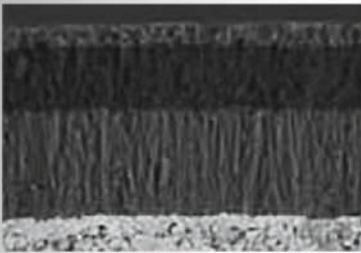


The new high-hardness CVD coating combined with special post-processing technology can effectively suppress sticky chips. With the red hard carbide matrix ensures excellent wear resistance.

Suitable for high-speed finishing of carbon steel and low-alloy steel under continuous working conditions.



TP6120

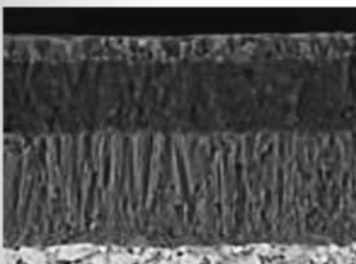


New strong and tough CVD coating and special low-stress post-processing technology. Combine with a matrix with good resistance to thermoplastic deformation of the tool tip. Ensure the high abrasion resistance and chipping resistance of the product.

Suitable for continuous-light interrupted working conditions of carbon steel, alloy steel. Finish to semi-finish processing



TP6130



Special cobalt-rich layer matrix technology, combined with high toughness CVD coating and advanced post-processing technology, increase the cutting edge's ability to resist damage and increase the stability of the product's service life.

Suitable for semi-finishing to rough machining of carbon steel and alloy steel under interrupted working conditions.



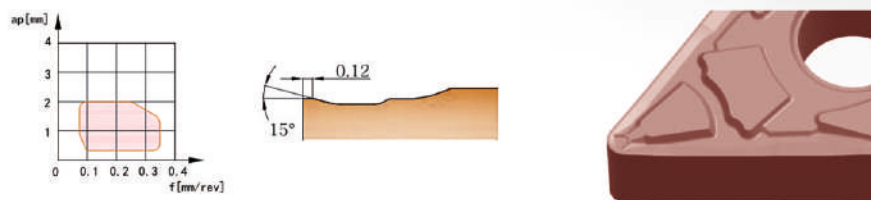
DragonCoat

TOTIME

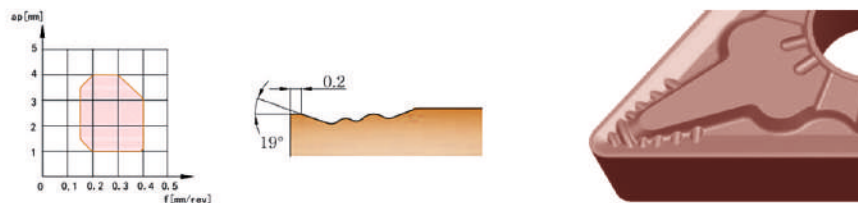
Chipbreakers

Negative

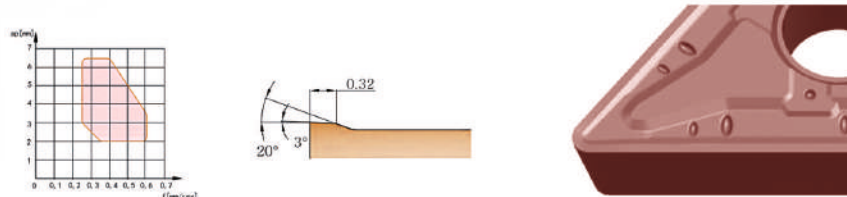
-PF *First choice chipbreaker for finishing steel alloys. The dimple structure decreases the contact area between the insert surface and chips, resulting in significant reduction of heat occurrence.*



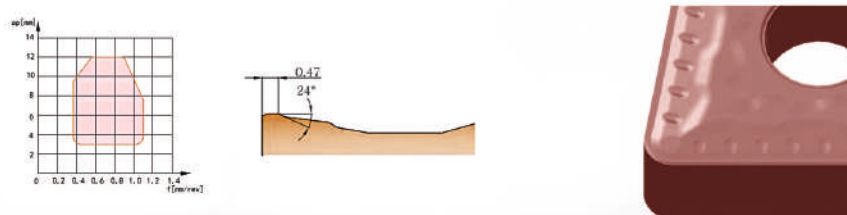
-PM *Designed for roughing and semi-finishing of steel alloys. General purpose chipbreaker used for medium cutting with a unique geometry consisting of sharp edges and large rake angle to perform in a wide range of conditions.*



-PR *Specially designed with a variable rake angle and land to provide edge sharpness and strength in roughing operations for steel alloys.*



-PH *Heavy cutting progressive chipbreaker designed for heavy roughing operations in steel alloys. Reinforced geometry to provide strength in the cutting action.*



DragonCoat

TCTIME

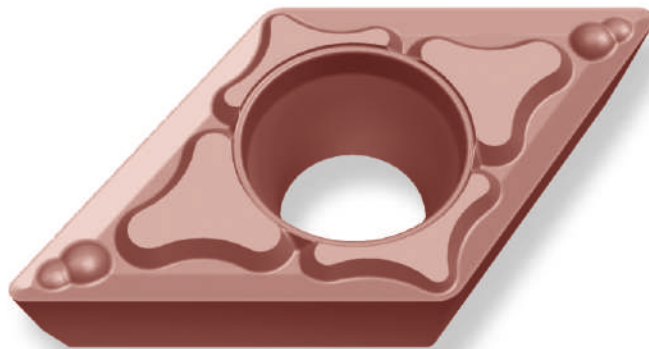
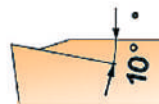
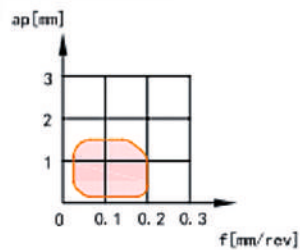
Chipbreakers

Positive

-MM

Developed chipbreaker for medium cutting.

Excellent chip control due to wide and positive chip flow zone



DragonCoat

TOTIME

Product Range

Negative

CN--

Product Code	TP6110	TP6120	TP6130
CNMG120404-PF	●	●	●
CNMG120408-PF	●	●	●
CNMG120404-PM	●	●	●
CNMG120408-PM	●	●	●
CNMG120412-PM	●	●	●
CNMG160608-PM	●	●	●
CNMG160612-PM	●	●	●
CNMG120408-PR	●	●	●
CNMG120412-PR	●	●	●
CNMG120416-PR	●	●	●
CNMG160612-PR	●	●	●
CNMG160616-PR	●	●	●
CNMG190616-PR	●	●	●
CNMG190624-PR	●	●	●
CNMM190624-PH	●	●	●
CNMM250924-PH	●	●	●

DN--

Product Code	TP6110	TP6120	TP6130
DNMG110404-PF	●	●	●
DNMG110408-PF	●	●	●
DNMG150404-PF	●	●	●
DNMG150408-PF	●	●	●
DNMG150604-PF	●	●	●
DNMG110404-PM	●	●	●
DNMG110408-PM	●	●	●
DNMG150404-PM	●	●	●
DNMG150408-PM	●	●	●
DNMG150412-PM	●	●	●
DNMG150604-PM	●	●	●
DNMG150608-PM	●	●	●
DNMG150612-PM	●	●	●
DNMG150408-PR	●	●	●
DNMG150412-PR	●	●	●
DNMG150608-PR	●	●	●
DNMG150612-PR	●	●	●
DNMG150616-PR	●	●	●

SN--

Product Code	TP6110	TP6120	TP6130
SNMG120404-PF	●	●	●
SNMG120408-PF	●	●	●
SNMG120404-PM	●	●	●
SNMG120408-PM	●	●	●
SNMG120412-PM	●	●	●
SNMG120416-PM	●	●	●
SNMG150608-PM	●	●	●
SNMG150612-PM	●	●	●
SNMG190612-PM	●	●	●
SNMG120408-PR	●	●	●
SNMG120412-PR	●	●	●
SNMG120416-PR	●	●	●
SNMG190616-PR	●	●	●
SNMG190624-PR	●	●	●
SNMM190624-PH	●	●	●
SNMM250924-PH	●	●	●

TN--

Product Code	TP6110	TP6120	TP6130
TNMG160404-PM	●	●	●
TNMG160408-PM	●	●	●
TNMG160412-PM	●	●	●
TNMG220408-PM	●	●	●
TNMG220412-PM	●	●	●
TNMG220416-PM	●	●	●
TNMG160408-PR			●
TNMG160412-PR	●	●	●
TNMG220408-PR	●	●	●
TNMG220412-PR	●	●	●
TNMG220416-PR	●	●	●

VN--

Product Code	TP6110	TP6120	TP6130
VNMG160404-PF	●	●	●
VNMG160408-PF	●	●	●
VNMG160404-PM	●	●	●
VNMG160408-PM	●	●	●
VNMG160412-PM	●	●	●

WN--

Product Code	TP6110	TP6120	TP6130
WNMG060404-PF	●	●	●
WNMG060408-PF	●	●	●
WNMG080404-PF	●	●	●
WNMG080408-PF	●	●	●
WNMG060404-PM	●	●	●
WNMG060408-PM	●	●	●
WNMG060412-PM	●	●	●
WNMG080404-PM	●	●	●
WNMG080408-PM	●	●	●
WNMG080412-PM	●	●	●
WNMG080416-PM	●	●	●
WNMG080408-PR	●	●	●
WNMG080412-PR	●	●	●
WNMG080416-PR	●	●	●

TOTIME

Product Range

Positive

CC--

Product Code	TP6110	TP6120	TP6130
CCMT060202-MM		●	
CCMT060204-MM	●	●	
CCMT060208-MM		●	
CCMT09T302-MM		●	
CCMT09T304-MM	●	●	●
CCMT09T308-MM	●	●	●

DC--

Product Code	TP6110	TP6120	TP6130
DCMT070202-MM		●	
DCMT070204-MM		●	
DCMT11T302-MM		●	
CCMT09T302-MM		●	
DCMT11T304-MM	●	●	
DCMT11T308-MM	●	●	●

SC--

Product Code	TP6110	TP6120	TP6130
SCMT09T304-MM	●	●	
SCMT09T308-MM	●	●	●

TC--

Product Code	TP6110	TP6120	TP6130
TCMT110202-MM	●	●	
TCMT110204-MM	●	●	
TCMT16T304-MM		●	
TCMT16T308-MM		●	●

TP--

Product Code	TP6110	TP6120	TP6130
TPMT110202-MM		●	
TPMT110204-MM		●	
TPMT110304-MM	●	●	

VB--

Product Code	TP6110	TP6120	TP6130
VBMT110304-MM	●	●	
VBMT160404-MM	●	●	
VBMT160408-MM	●	●	●

DragonCoat



○ TOTIME Company
 ☆ TOTIME Agent



Totime Tools Co Ltd

Address: Room B, 5th Floor, Daini Nagata Building,
 Tamatsukuri, Chuo-Ku, Osaka, Japan 540-0004
Tel: (81)-6-67771660
Email: info@totimetools.co.jp
Web: www.totimetools.co.jp



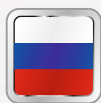
Totime Tools Sp. z o.o.

Address: Fabryczna 16 H, 53-609 Wrocław
 Poland
Tel: +48 71 798 57 76
Email: info@totimetools.eu
Web: www.totimetools.eu



Jin Sheng Trade (Dalian) Co.,Ltd

Address : Jiadi Foreign Garden, Dalian Development Zone,
 Liaoning Province, China
Tel: (86)-411-62692144
Email: info@totimetools.com
Web: www.totimetools.com



Totime Ltd

Address : Buiding Sinop, Sinopskaya nab., 22A, Saint-Petersburg,
 Russia, 191167
Tel: (7)-960-2635370
Email: info@totimetool.com
Web: www.totimetool.com